

Relational & Developmental Trauma. Moving towards being trauma-informed & trauma responsive (organizationally).

- Date:** 25th, 26th & 27th June 2019
Time: 10am to 5pm (25th) \ 9.30am to 5pm (26th & 27th)
Venue: Ashling Hotel, Parkgate Street, Dublin 2
Cost: 3 days: €300 (Early bird by 31st March €250)
Day 1 & 2: €200 (Early bird by 31st March €150)
Day 3: €150
Full lunch, tea/coffee included on each day
CPD points awarded for attendance

Days 1 & 2 (25th & 26th June)

Understanding the impact of relational and developmental trauma and disrupted attachment on children's brains, bodies, emotions, relationships, and behaviours: Theory and Practical Tools

Offers an abundance of learnings around the impact of trauma, neglect, toxic stress, and disrupted attachment on children, adolescents, and on their surrounding adults. Including on the impact of trauma and disrupted attachment on the body (Physical and sensory), brain (cognitive and neuropsychological), emotions, behaviours, learning, and relationships.

Day 3 (27th June)

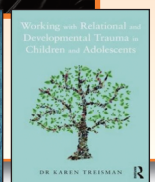
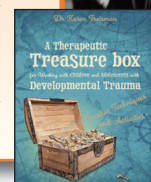
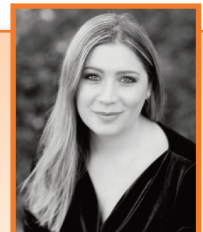
Moving towards being trauma-informed and trauma-responsive (organizationally).

Reflects on why a trauma-informed and trauma-responsive organisation is needed. It supports attendees to reflect, notice, magnify, and celebrate what they are already doing that is going well, and which is in line with the principles of trauma-informed practice. As well as making action plans and commitments for what areas need improvement, and expansion. Includes considering areas across the whole organisation such as recruitment and induction, through to behaviour policies, to the physical environment and to self-care.

The 3 days will utilise an array of learning and teaching styles including small group discussions, experiential hands-on learning, multimedia methods, and lecture delivery. Case studies and live examples will be interwoven throughout.

About the Presenter:

Dr Karen Treisman is a Highly Specialist Clinical Psychologist who has worked in the NHS and children's services for several years. Karen has also worked cross-culturally in both Africa and Asia with groups ranging from former child soldiers to survivors of the Rwandan Genocide. Karen has extensive experience in the areas of trauma, parenting, and attachment, and works clinically using a range of therapeutic approaches with families, systems, and children in or on the edge of care, unaccompanied asylum-seeking young people, and adopted children. In addition to holding a doctorate in Clinical psychology, Karen has undergone a range of specialist trainings including in EMDR, Narrative Therapy, Dyadic Developmental Psychotherapy, Sensory Attachment Intervention, and Theraplay.



More detailed information is available on our website www.aacpi.ie

To book a place go to 'payments' on our website www.aacpi.ie

For further information contact Ger Matthews. Email: ger@aacpi.ie

Phone: +353 (0) 87 7391794